

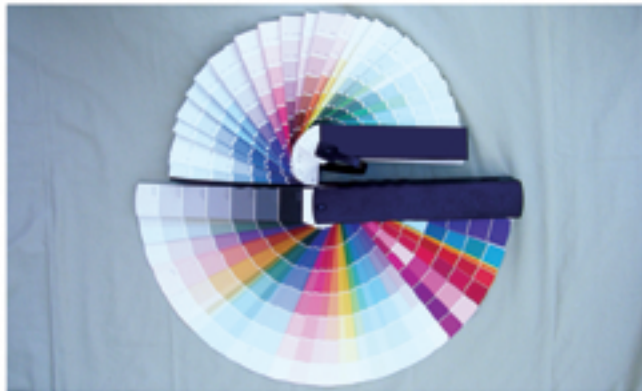
RADIOSITY 3000



Attics Can Provide the Most Benefit

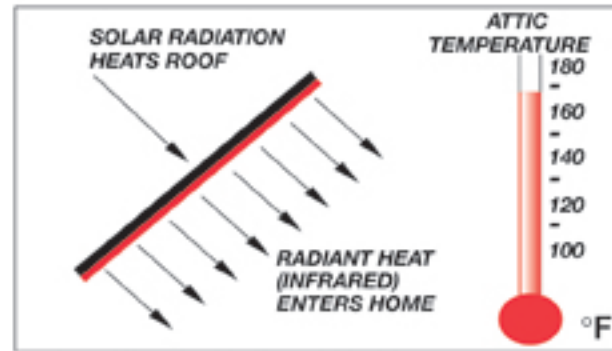


Exterior & Interior Paint Jobs are Enhanced

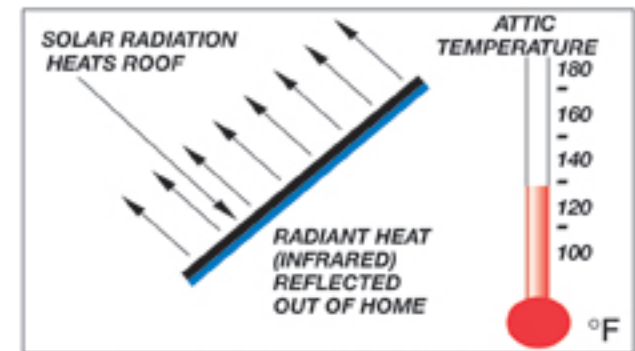


Choose any Color in the Palette

RADIOSITY radiant barriers™



WITHOUT RADIANT BARRIER



WITH RADIANT BARRIER

How Radiant Barriers Work in Attics

Radiosity 3000 provides an effective radiant barrier when applied to surfaces that transfer heat. Radiosity 3000 is not an insulation but, due to its nature, will reflect heat in the form of infrared radiation. Much as painting a window will block visible sunlight, applying Radiosity 3000 will block radiation in the infrared spectrum. Radiation in the infrared spectrum is responsible for much of the heat rise in attics. Blocking this heat can effectively reduce attic temperatures.

How Radiant Barriers Can Work Around the Home

Interior and exterior surfaces treated with Radiosity 3000 can reduce infrared energy throughout the day. Individual walls and ceilings can be treated to reduce summer temperatures, as needed. Entire paint jobs can benefit from the enhanced capabilities offered by Radiosity 3000. Increased life and washability are an added bonus of Radiosity 3000.

Expected Energy Savings

Reducing attic and duct temperatures provide energy savings that average 15 to 20 percent. Conditions that can affect these savings vary from one home to the next. The U. S. Department of Energy has determined that savings up to 42% can be realized from homes that are fully protected by radiant barriers.

Types of Paint to Use

Most types of paints can be used with Radiosity 3000. Paint sheen will dull to the next lower type. Test an area first for color and sheen matching.

For attic installations, use a high quality Latex based paint as described below.

For Latex based paints, satin, semi-gloss or gloss must be used.

For metal roofing, spraying from the topside, use a high quality Elastomeric paint or DTM.